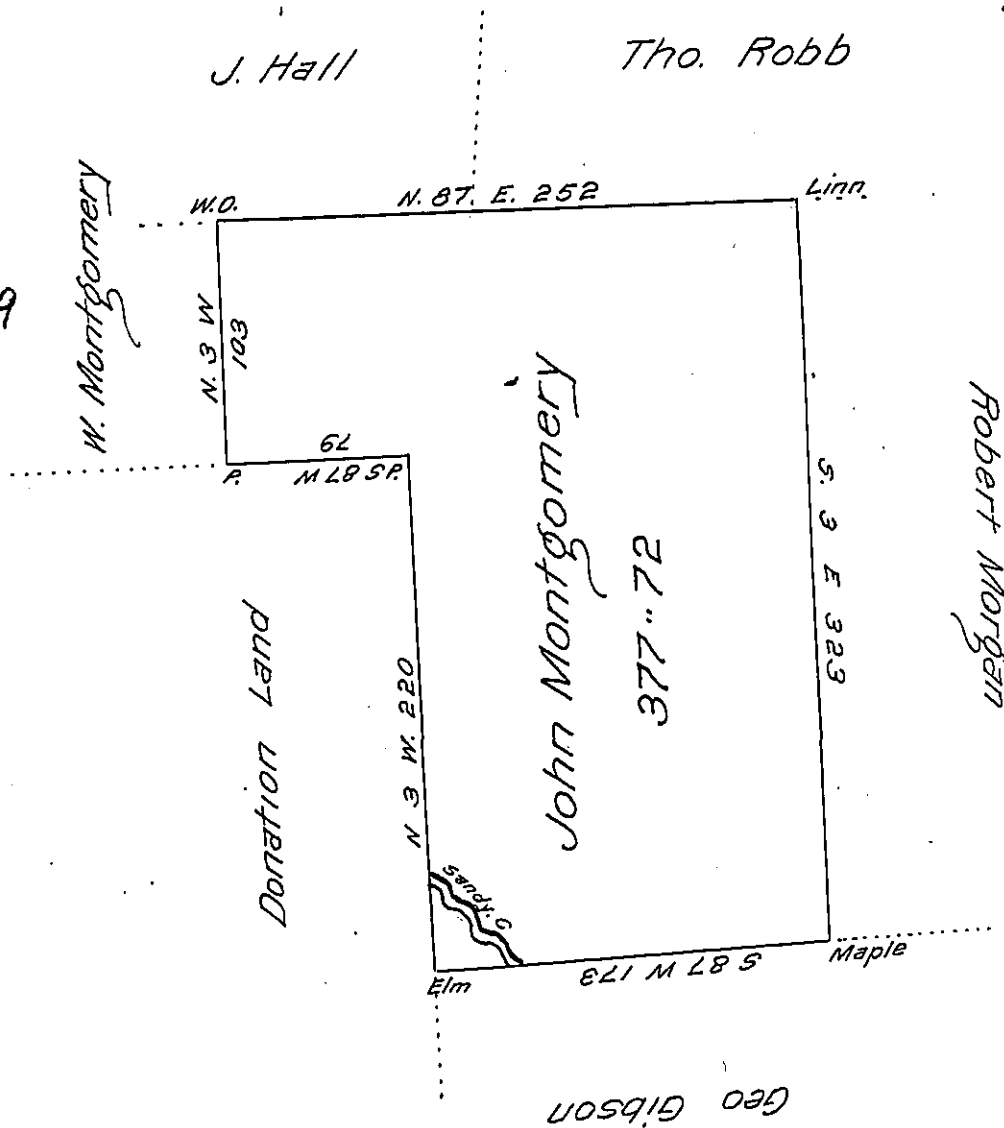


FORM No. 1.

C-212-169



Situate on Sandy Creek in District No. 3 Allegheny County, containing three hundred Seventy seven Acres, seventy two perches and allowance; Survey'd 28 June 1800 - on Actual Settlement made by John Montgomery

Ben Stokely D.S

Surveyor General
of
Pennsylvania

IN TESTIMONY that the above is a copy of the original remaining on file in the Department of Internal Affairs of Pennsylvania, made conformably to an Act of Assembly approved the 16th day of February, 1833, I have hereunto set my Hand and caused the Seal of said Department to be affixed at Harrisburg, this thirty first day of December 1906.

Isaac B. Brown
Secretary of Internal Affairs.